



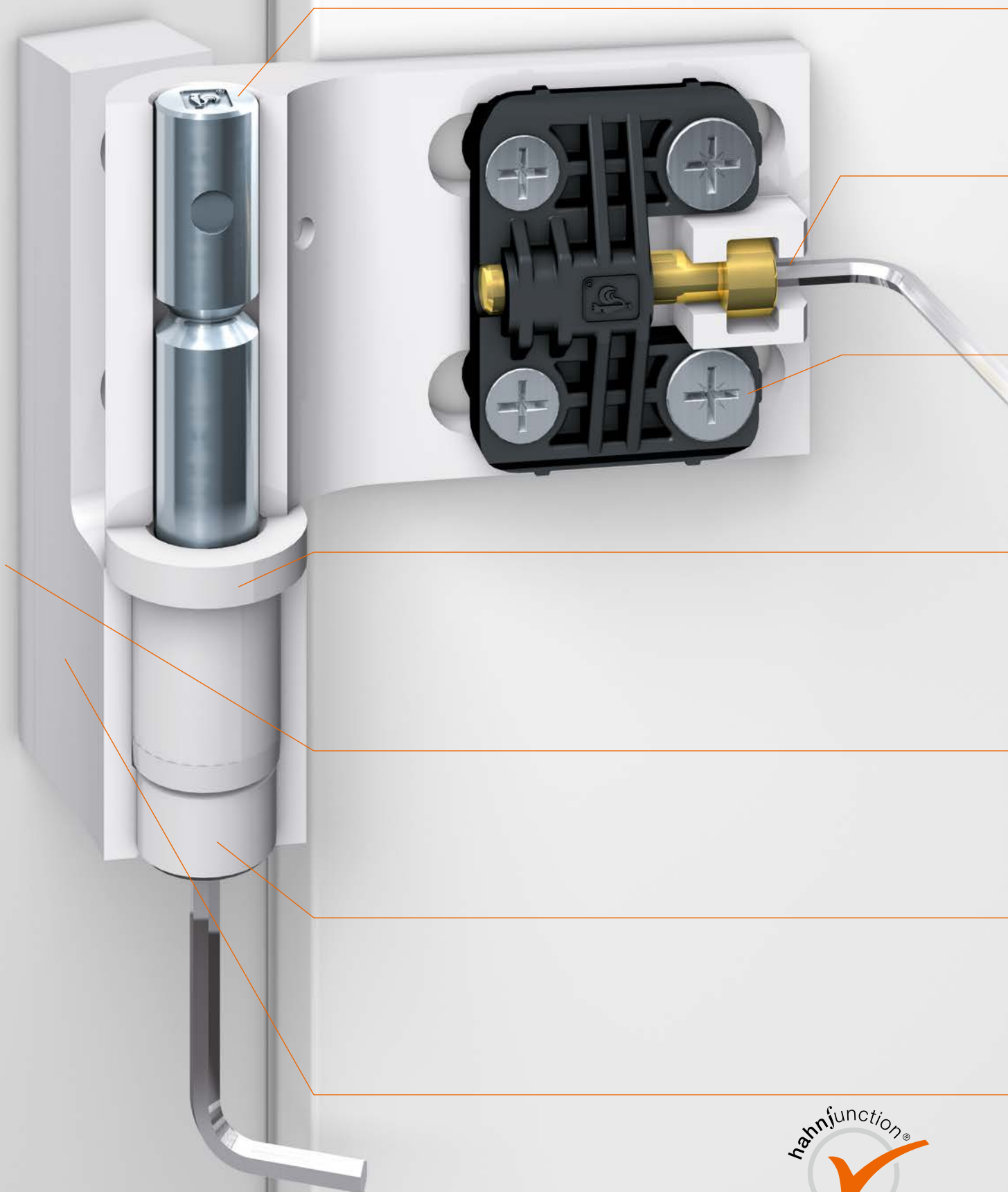
Hahn KT-G

The simple hinge for light doors



MADE IN GERMANY







Hahn KT-G

The simple hinge for light doors

Solid bearing pins
for great stability

Horizontal adjustment
 $\pm 5 \text{ mm}$ by means of integrated
adjustment screw

Self-tapping fastening screws
for quick and easy hinge mounting

**Bearing bushing made
of high-quality material –**
For low-maintenance bearing assembly

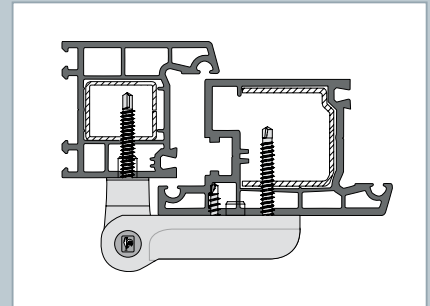
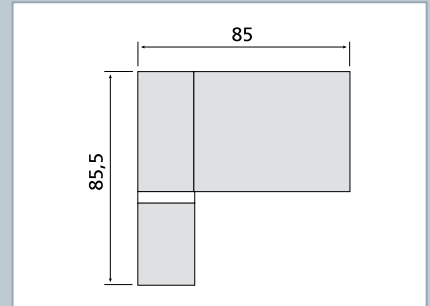
Adjustment of sealing pressure
of up to $+ 5 \text{ mm}$ by adding
dimensionally stable PVC furring
to hinge plate

Height adjustment $+ 3 \text{ mm}$
with integrated adjustment spindle

High-quality powder coating
in RAL 9016 for durable weathering
resistance

Other advantages

- Frame, door and bearing pin made of high-strength Gd-Zn, mounting parts made of high-quality PVC
- Door leaf adjustable in four directions
- Same appearance retained after adjustment
- Optimised, quick fastening method: direct screw connection in frame and door with special self-drilling screws
- Supports max. 70 kg
- Can be used on left or right-hand doors
- Bearing assembly maintenance-free



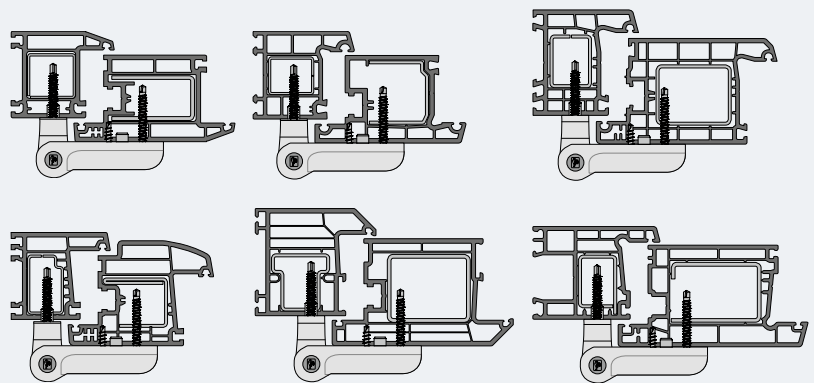


Easy to work with even in workshops

Hardly any other hinge is so easy to work with as the Hahn KT-G. A non-verbal installation manual is more than sufficient for explaining the few steps required. Even door makers with little experience will be adept at installing the hinge. Packaged in a case of 24 hinges, all parts are separated according to frame and door for the production process at various stations. Just take the corresponding load and place in your production process. There is even a drilling template included for frames and doors.

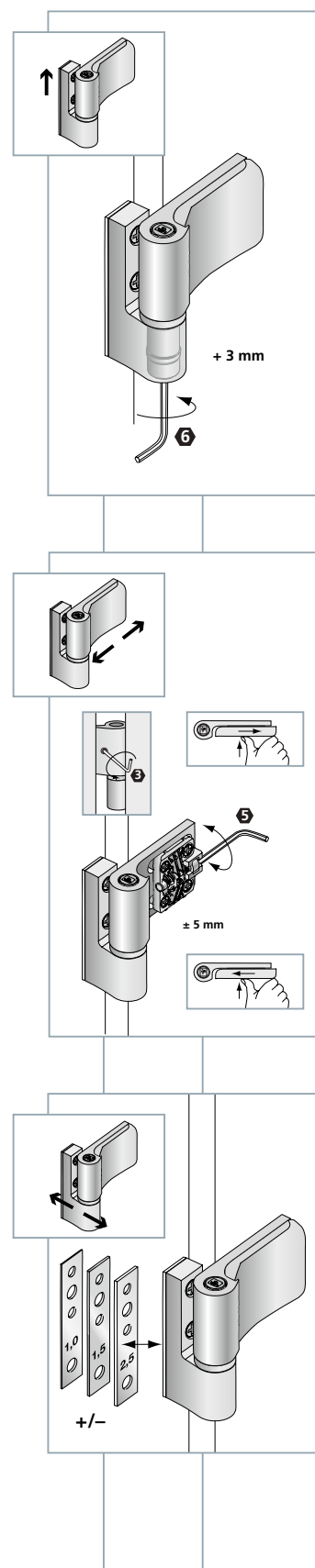
With self-tapping screws, it is easy to securely position and fasten the hinge to the frame. In case of high heat insulating chambers, the KT-G can be combined with the Hahn step-screw. Doing so will prevent the surface of the sections from buckling and ensure that the hinge is held firmly in place.

Profile variations





Tips for making adjustments





KT-G – The simple hinge for light doors

Developed for PVC doors all over the globe, the Hahn KT-G satisfies the demands on both workmanship and ease of use. The hinge is suited for doors which are not subjected to high loads – For instance, residential doors and front doors with normal frequency as well as side entrance doors.

The KT-G handles a broad range of systems. Doors may weigh up to 70 kg, always depending on the door frames that are used. Only limitation: the KT-G is available exclusively in RAL 9016 with white PVC parts. Thus, it fits in with the most common colour of door frames used in the world.



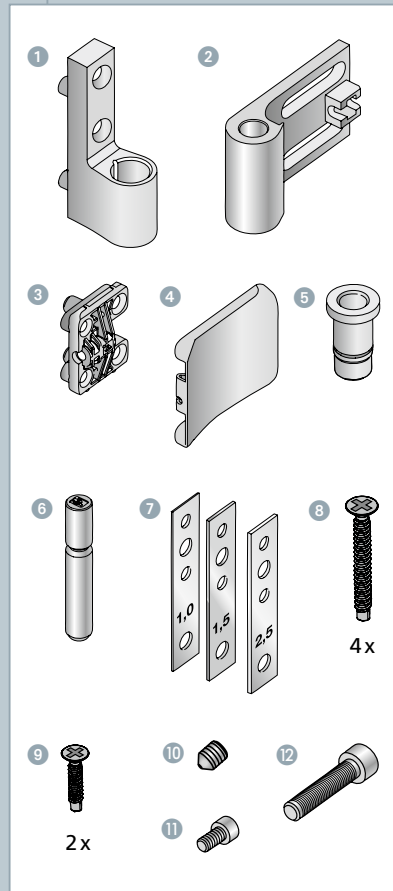
Especially easy to use

The KT-G offers all the convenience that is standard for a Hahn universal hinge. Suited for use on left and right-hand doors and with three-dimensional adjustability: ± 5 mm horizontally, + 3 mm vertically and max. + 5 mm in sealing pressure within the upstand range of 15 to 20 mm. All adjustments can be made using standard tools. Special accessories are not needed.

The bearing assembly is maintenance-free and the hinge can be adjusted in all three levels. The KT-G offers everything that a hinge "Made in Germany" is expected to deliver – A hinge with hahnfunction.



Parts



- 1 Frame hinge part
- 2 Door hinge part
- 3 Mounting part
- 4 Cover cap
- 5 Bearing bushing with lifting/lowering spindle
- 6 Bearing pin
- 7 Hinge base furring
- 8 Self-tapping screw 5,5 x 48 mm
- 9 Self-tapping screw 5 x 25 mm
- 10 Set screw
- 11 Locking screw (small)
- 12 Adjusting screw



MADE IN GERMANY

Hahn KT-G

Item numbers

Parts

Accessories

Item	Quantity	Item number
KT-G	1 PU*	K705GV000
① Frame hinge part	1	K700G0000
② Door hinge part	1	K700G0001
③ Mounting part	1 PU*	K700B0012
④ Cover strip	1	K200E0013
⑤ Bearing bushing with lifting/lowering spindle	1 PU*	K200B0016
⑥ Bearing pin	1	K700G0002
⑦ Hinge base furring 1 mm	1 PU*	K700B0015
⑦ Hinge base furring 1,5 mm	1 PU*	K700B0014
⑦ Hinge base furring 2,5 mm	1 PU*	K700B0013
⑧ Self-tapping screw 5 x 25 mm	1 PU**	K700B1003
⑨ Self-tapping screw 5,5 x 48 mm	1 PU**	K700B1002
⑩ Set screw	1 PU*	K200B1003
⑪ Locking screw (small)	1 PU*	K200B1002
⑫ Adjusting screw	1 PU*	K400B1017
Drilling template	1	K700E0005
Step screw		Available on request
Tool for screwing in step screw		K450A0004

* 1 PU (packing unit) = 24 pieces

** 1 PU (packing unit) = 48 pieces

Prsp KT-G/GB/D-PRO0096/08.13 LW1* Subject to technical changes.